

M2 BASIC

HIGH SPEED DOORS

CRASH FORGIVING & AUTOMATICALLY RE-INSERTING



Designed for interior and limited exterior use.

The DYNACO M2 Basic is a basic all-purpose high-speed roll up door for interior or exterior applications at up to 100 cycles per day. It is engineered and built with the superior quality and unique features that all DYNACO doors bring to your operation. And yet, it's very affordable. However, this door is not recommended for special applications where freezer and cold storage or cleanroom standards are required.

The M2 Basic is a gear driven, push-pull action door built with the DYNACO soft bottom edge and bottom edge detector safety mechanism, as well as infrared sensors attached to the side guides for optimum employee and product safety.

FEATURES AND BENEFITS:

High Speed Operation:

Up to 24" per second opening speed, depending on door size.

All purpose High Speed door:

For use up to 100 cycles per day.

Superior Seal:

Patented side frame assembly provides virtually perfect seal while eliminating damage and wear prone components.

Vertical Action:

Vertical action conserves energy.

Self Re-inserting:

Automatic re-insertion reduces downtime, improves ergonomics.

Low Profile:

Small footprint conserves valuable wall and rack space. Improves turning radius.

Greater Safety:

Unique Soft Curtain design is forgiving and protects users from hard edge accidents.

Manaras operator:

Unique Soft Curtain design is forgiving and protects users from hard edge accidents.



DYNACO
HIGH PERFORMANCE DOORS

DYNACO. THE SAFEST CHOICE

M2 BASIC

HIGH SPEED DOORS

Designed for up to 100 cycles per day in an interior or limited exterior environment.

Maximum dimensions: W 12' x H12' Resists to and operates under pressures up to:

Width (ft.)	UP TO 7'	8'	9'	10'	11'	12'
Pressure (lbs./sq.ft.)	23.89	20.90	18.58	16.72	15.20	13.93
Wind speed* (mph)	95	90	85	80	75	72.5

*Wind speed is indicative, not including any multiplication coefficients taking into account the configuration of the building.
 ** Wind loads are for fully closed, static door. Operational wind loads are lower.

Specifics:

Door curtain:

27oz reinforced PVC vinyl, with your choice of color and vision.

Superior sealing:

A weather-tight side and top sealing and a bottom that molds to your floor are our guaranty for a near perfect full perimeter seal.

Small footprint:

Our well engineered design combines a small footprint with high performance, saving you more valuable floor space.

Self re-inserting:

A push on the button is all it takes to be back up and running after dislodging the door upon impact.

Greater safety:

Each door panel comes standard with our unique soft curtain. No stiffeners or bottom bars but true soft bottom edge technology, a reversing edge and built-in infrared sensors are a standard DYNACO guarantee to provide optimum safety.

Best warranty:

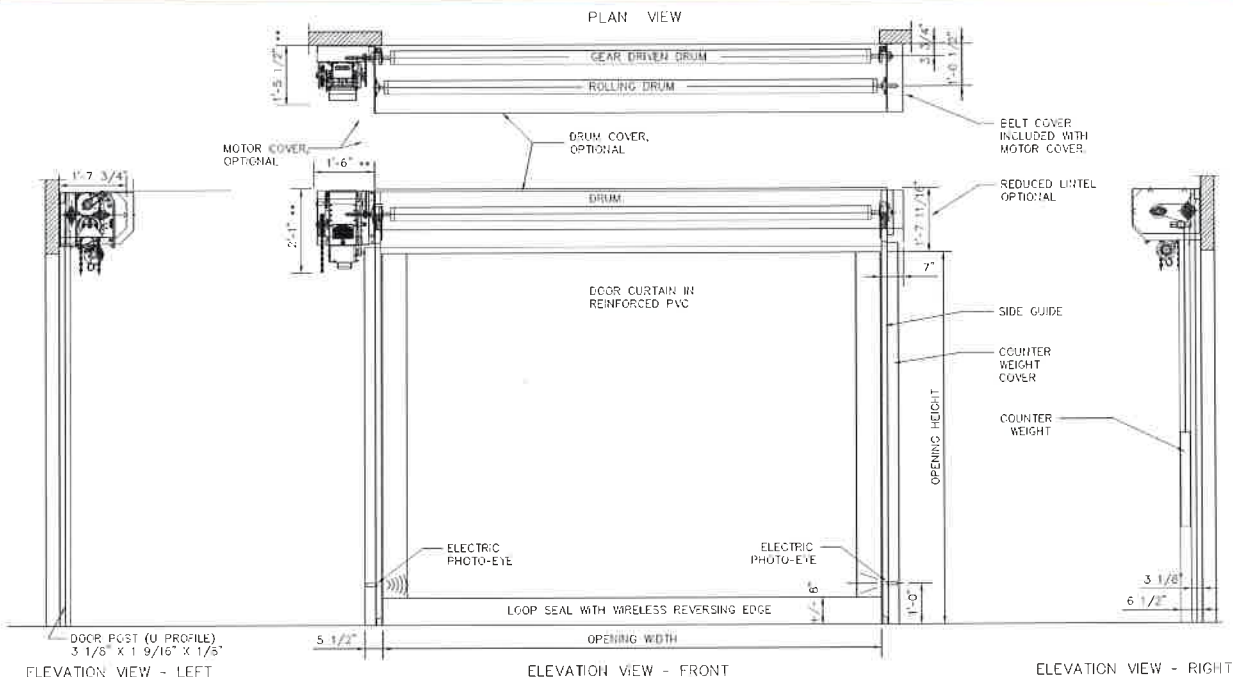
Because we are convinced our door is the best high performance door on the market we offer an industry leading warranty.

Door operation:

M2 basic doors are operated with a Jackshaft operator.

Great value:

Economically designed for low speed / low cycle operation of 100 cycles per day.



DYNACO reserves the right to modify its product without prior notice.



DYNACO. THE SAFEST CHOICE

Call DYNACO for additional information • P: 1-800-459-1930 • F: 1-800-459-1960 • Email: dynaco@dynacodoor.us • www.dynacodoor.us